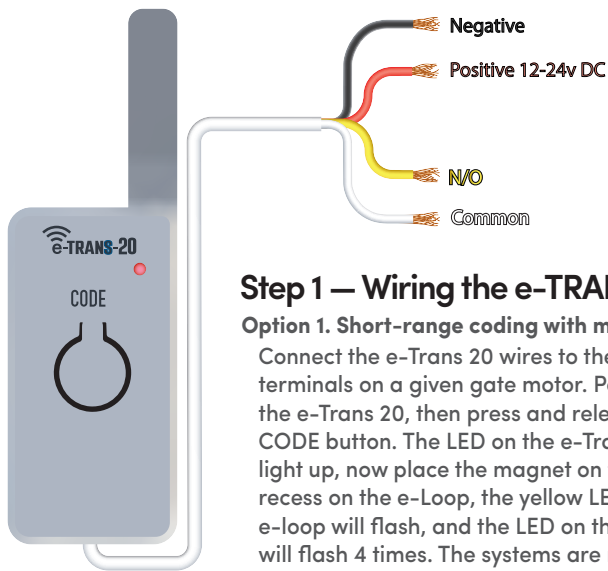


## Specifications

Frequency:	433.39 MHz
Security:	128-bit AES encryption
Range:	up to 25 metres
Battery life:	up to 2 years
Battery type:	CR123A 3V 1500 m/a Lithium Battery x1 (included)
Replacement battery type:	CR123A 3V 1500 m/a x 1

## e-LOOP Micro Fitting Instructions

### Installation in 3 simple steps



### Step 1 — Wiring the e-TRANS 20

#### Option 1. Short-range coding with magnet

Connect the e-Trans 20 wires to the matching terminals on a given gate motor. Power up the e-Trans 20, then press and release the CODE button. The LED on the e-Trans 20 will light up, now place the magnet on the CODE recess on the e-Loop, the yellow LED on the e-loop will flash, and the LED on the e-Trans 20 will flash 4 times. The systems are now paired, and you can remove the magnet.

#### Option 2. Long range coding with magnet (up to 25 metres)

Power up the e-Trans 20, then place the magnet on the code recess of the e-Loop, the yellow code LED will flash once now remove magnet and the LED will come on solid, now walk over to the e-Trans 20v and press and release the CODE button, the yellow LED will flash and the LED on the e-Trans 20 will flash 3 times, after 15 seconds the e-loop code LED will turn off.

### Step 2 — Fitting the e-LOOP Micro to Driveway

Using a 5mm concrete masonry drill, drill the two mounting holes 40mm deep, then use the 5mm concrete screws supplied to fix to the driveway.

**IMPORTANT:** Never fit near high voltage cables, this can effect the e-Loop's vehicle detection and radio range capabilities.



*Micro*

Wireless Vehicle  
Detection System

ELMIC

