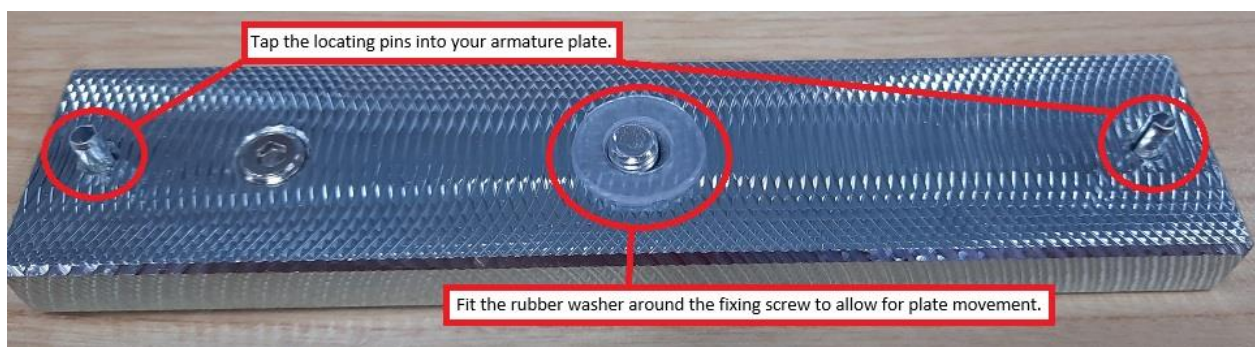


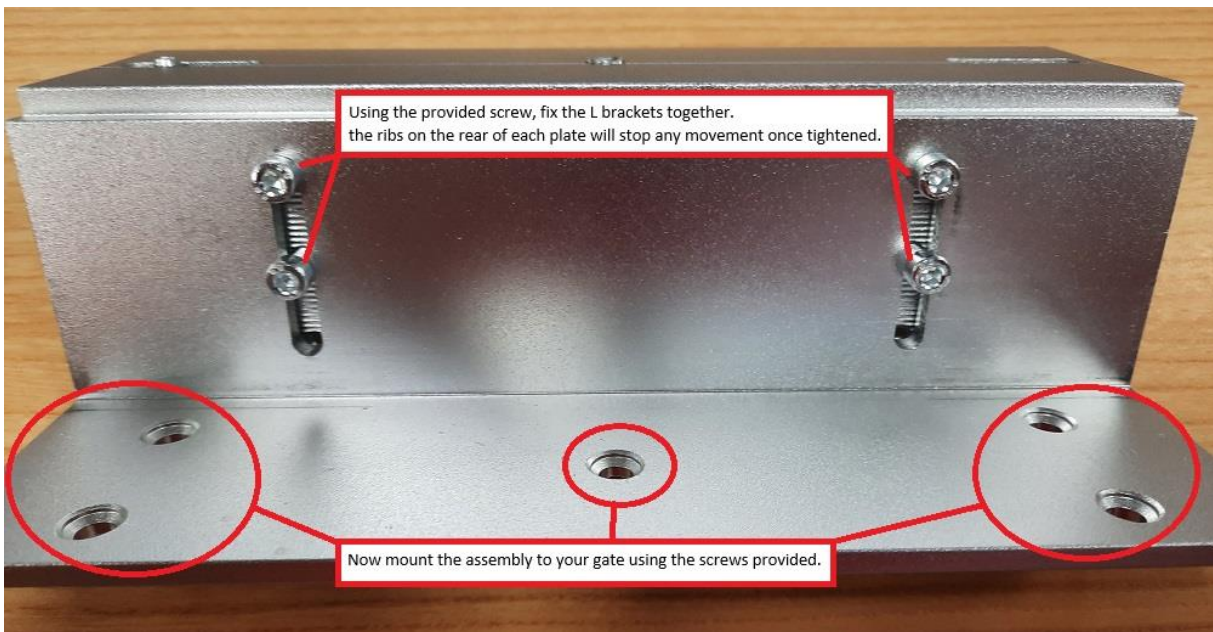
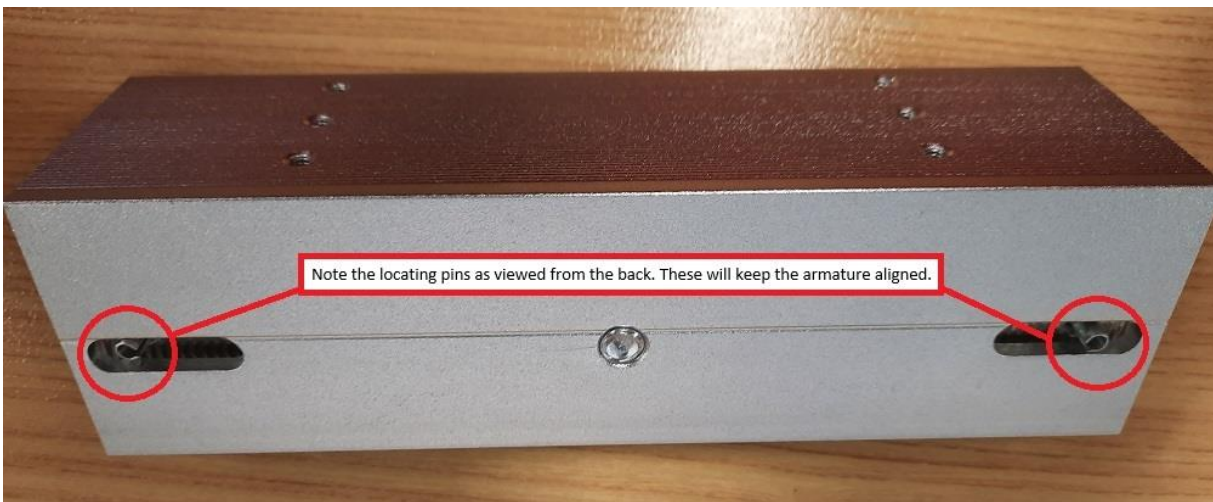
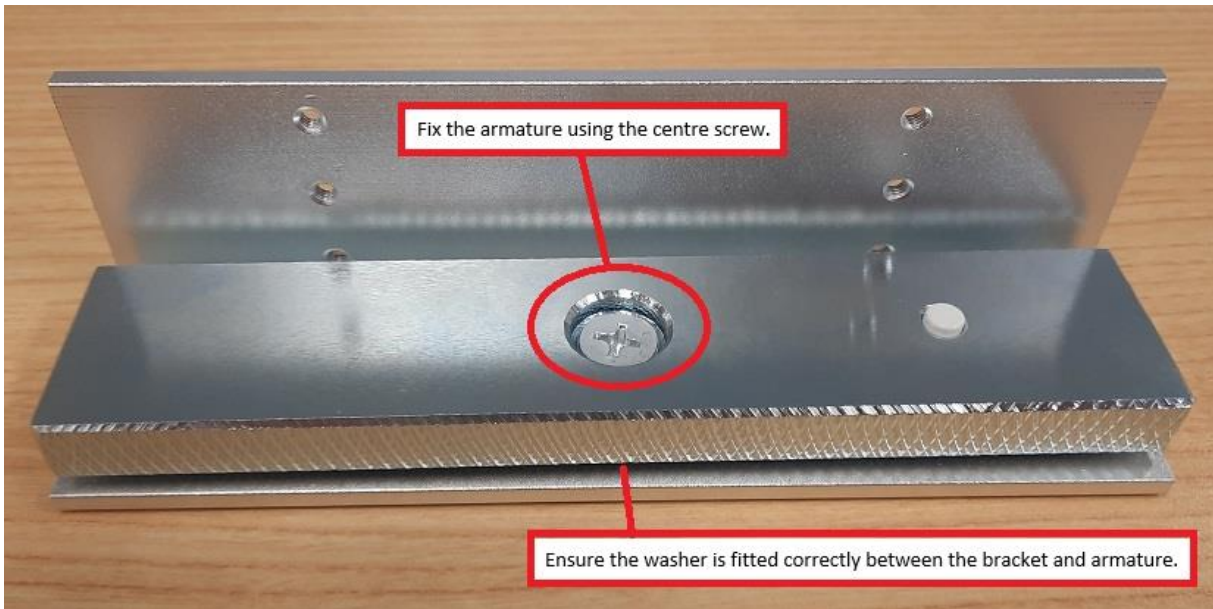
# GTR116 Magnetic Lock Assembly Manual

**Compatible With:** GTR058 Double Swing Gate Opener

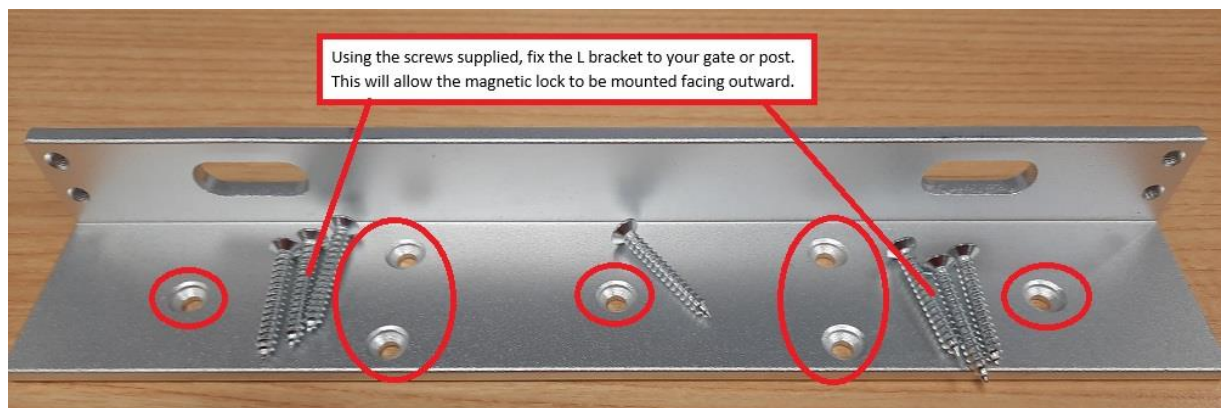
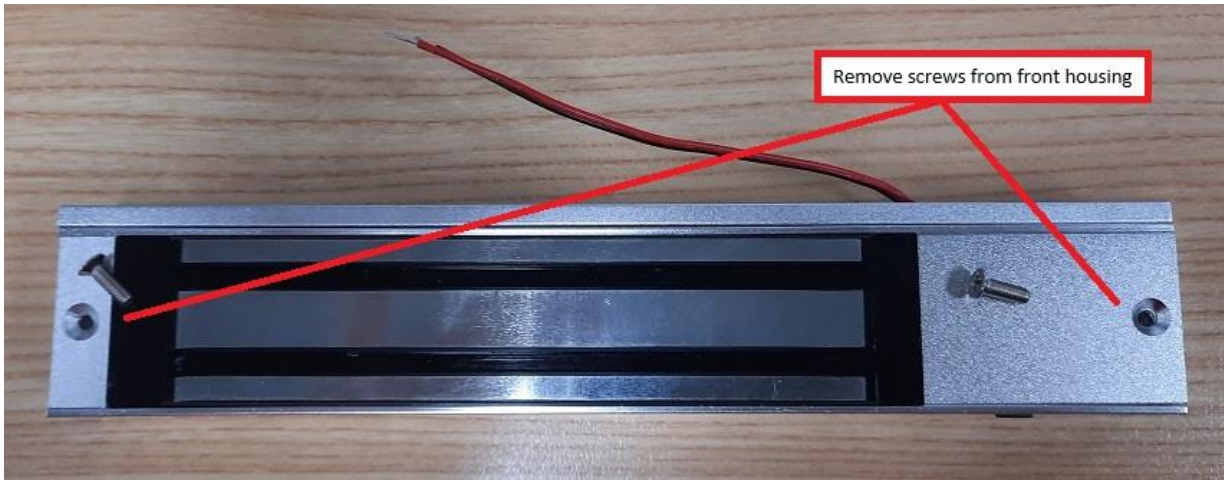
- 12V/24V electromagnetic lock with 280kg holding force
- Recommended for gates in high wind areas
- Non-latching operation allows opening when power is lost

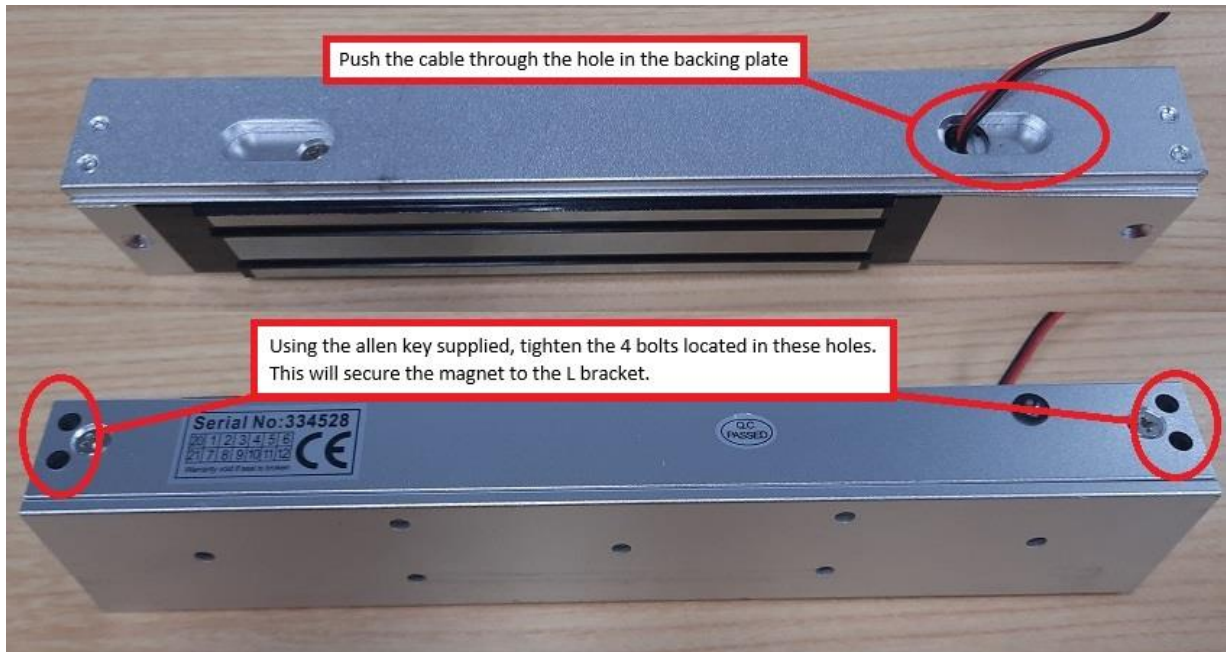
## Armature Plate and Bracket Assembly





## Magnet and Bracket Assembly





## Wiring Instructions for GTR058 Double Swing Gate Opener

When connecting the GTR116 electric lock to the GTR058 gate opener the wiring should be as follows

