

# THERMOPLASTIC RUBBER MEDICAL CASTORS

These castors are ideal for light to medium duty applications, such as on shower and commode chairs, food service trolleys and racking, utility trolleys and hospital equipment.

Thermoplastic wheels are quiet running, non-marking and offer a low rolling resistance. An enclosed plastic housing design reduces the amount of bacteria that sticks to the castor and components.

- Suitable for wash-down applications
- Attractive grey finish



S5386B

## ENCLOSED PLASTIC DESIGN

Less exposed metal components, reducing the amount of bacteria that sticks to the castor and components.

## ATTRACTIVE GREY NYLON FRAME

Suitable for washdown applications.

## NON-MARKING WHEELS

Protect floors and surfaces.



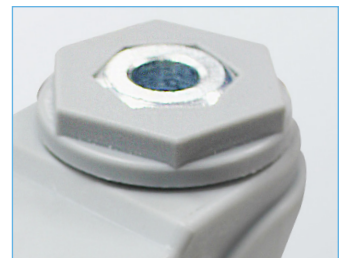
S3392



S4386B



S5386



Diameter (mm)	Width (mm)	Height (mm)	Wheel Type	Bolt Hole	Bearing Type	Load Capacity (kg)	Swivel Radius (mm)	With Brake (mm)	Swivel Code
75	32	112	Thermoplastic Rubber	M10	Ball Bearing	80	75	95	S3392
100	32	140	Thermoplastic Rubber	M12	Ball Bearing	100	85	105	S4386
125	32	168	Thermoplastic Rubber	M12	Ball Bearing	100	105	110	S5386

## Brake Options

B = Brake

To order castors with Brake or directional lock add B to end of swivel code e.g. S3392B