

ZINC DUROLITE SERIES SINGLE BOLT AND PLATE CASTORS

UP TO 100KG / CASTOR

Available with a wide range of wheels, the Zinc DuroLite Series is commonly used on a vast array of mobile equipment. The castors are enhanced by a twin swivel race ensuring longevity and making them ideal for use in hospitals, retail shops and general industry.

Zinc DuroLite Series castors feature a bolt hole for bolt or pintle fitting or baseplate designed for flexibility, with the bolt holes being slotted on an angle to give users a multitude of mounting options. This allows the castors to be matched with American and imported castors. The baseplate design also matches European standards for a growing number of uses and equipment.





S6081B

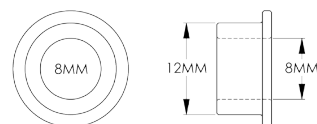
SPECIFICATIONS & FITTINGS

Diameter (mm)	Width (mm)	Wheel Type	Wheel Code	Bearing Type	Load Capacity	Height (mm)	Swivel Radius	With Brake	Bolt Size (mm)	Swivel Code
75	32	Inst Rubber	IR3008	Ball	80/45	107	71	105	12	S3080 #
75	32	Reb Rubber	RR3348	Ball	80/45	107	71	105	12	S3355 #
75	32	Poly Nylon	PU3344	Ball	80/45	107	71	105	12	S3330 #
75	30	Nylon	NY3321	Plain	80/45	107	71	105	12	S3326 #
100	32	Inst Rubber	IR4007	Ball	100/80	133	90	106	12	S4080
100	32	Anti Static	AS4005	Ball	100/80	133	90	106	12	S4493
100	32	Reb Rubber	RR4473	Ball	100/80	133	90	106	12	S4483
100	32	Poly Nylon	PU4444	Ball	100/80	133	90	106	12	S4484
100	30	Nylon	NY4417	Plain	100/80	133	90	106	12	S4485
125	32	Inst Rubber	IR5007	Ball	100/80	159	102	106	12	S5080
125	32	Anti Static	AS5005	Ball	100/80	159	102	106	12	S5593
125	32	Reb Rubber	RR5573	Ball	100/80	159	102	106	12	S5583
125	27	Poly Nylon	PU5555	Ball	100/80	159	102	106	12	S5584
125	30	Nylon	NY5517	Plain	100/80	159	102	106	12	S5585
150	32	Inst Rubber	IR6009	Ball	100/80	187	125	125	12	S6080
150	30	Poly Nylon	PU6660	Ball	100/80	187	125	125	12	S6081

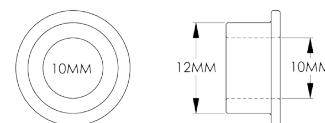
To order castor with Red Brake (BR) or Green Directional Lock (D) add BR or D to the end of the Swivel Code., EG S6080BR indicates red brake castor. All brakes are Swivel, Lock & Brake. Castors marked # are not available with directional lock.

NYLON EXPANDING PINTLES

Pintle	Pintle Code	Pintle Type
	OBT12-P1	For 19mm ID Round Tube
	OBT12-P2	For 22mm ID Round Tube
	OBT12-P3	For 28.5mm ID Round Tube
	OBT12-P4	For 19mm ID Square Tube
	OBT12-P5	For 22mm ID Square Tube
	OBT12-P6	For 28.5mm ID Square Tube



Reduction bushes available to suit 8mm fittings, code 100RED12080BT



Reduction bushes available to suit 10mm fittings, code 100RED12100BT



S4483

*Also see page 92 for Solid and Threaded pintle options

CASTOR FITTING REQUIREMENTS

To fit this castor to a 20mm thick base requires a 50mm x 12mm set screw. Reduction bush 100RED12100BT available to allow fitting with 10mm set screw.